

Capital Asset Advisory Committee 2018 Capital Improvement Program Financial Status as of February 15, 2021

February 18, 2021

2018 CAPITAL IMPROVEMENT PROGRAM – FINANCIAL STATUS 2/15/2021

Revenue

\$ 567,000,000	Bond Issuance
\$ 50,165,349	Premium on First Bond Issuance
\$ 68,309,148	Premium on Second Bond Issuance
\$ 11,779,719	Interest Through January 2021, net of bank fees
\$ 51,353,182	Fiscal Years 2019, 2020 and 2021 Capital Transfers (COP Principal & Interest Payments Removed)
\$ (2,948,716)	Issuance Costs (Both issuances)
\$ 745,658,682	

Expenses

As of February 15, 2021

\$ 272,190,328	Total Expended - All projects
\$ 97,937,557	Total Encumbered - All projects

Charter Projects

\$ 42,442,388	Total Expended - Charter
\$ 4,085,001	Total Encumbered - Charter

\$? in Contracts on March 4 BOE Agenda for Approval

As of January 15, 2021

\$ 259,937,912	Total Expended - All projects
\$ 103,802,266	Total Encumbered - All projects

\$ 41,440,395	Total Expended - Charter
\$ 2,721,885	Total Encumbered - Charter

2018 CAPITAL IMPROVEMENT PROGRAM – FINANCIAL STATUS 2/15/2021

Funding Breakdown 2018 Capital Improvement Program

\$	567,000,000	First & Second Bond Issuances
\$	50,165,349	Premium on First Bond Issuance
\$	68,309,148	Premium on Second Bond Issuance
\$	11,779,719	Bond Interest Through January 2021, Net of Bank Fees
\$	51,353,182	FY 2019, 2020 & 2021 Capital Transfers (COP Principal & Interest Removed)
\$	(2,948,716)	Issuance Costs (Both Issuances)
<hr/>		
\$	745,658,682	Funds to Date
	TBD*	Future Bond Interest Earnings
\$	83,601,924	4 Years Capital Transfer
	TBD*	Interest on Capital Transfer
<hr/>		
\$	829,260,606	Preliminary Total

TBD* To Be Determined

2018 CAPITAL IMPROVEMENT PROGRAM – FINANCIAL STATUS 1/15/2021

March 4 BOE Items

Consultant Contracts: D'Evelyn Jr. / Sr., Evergreen Middle, Evergreen High, Powderhorn Elementary

Construction Contracts Bid: Brady Option, Maple Grove ES, Fitzmorris ES, Kyffin ES, Lawrence ES

Construction Contracts to be Bid: Lasley ES, Patterson ES, Deane ES, Pomona HS GMP, 3- Artificial Turf Fields / 4 All-Weather Tracks GMP at 4 HS

April 8 BOE Items

Construction Contracts to be Bid: Ryan ES, Dennison ES, Sheridan Green ES, Miller Special, Kullerstrand ES, D'Evelyn Jr./Sr. HS, Marshdale ES Replacement, Carmody MS, Allendale ES, Stott ES, Vanderhoof ES, DW Paving,

2018 CAPITAL IMPROVEMENT PROGRAM – FINANCIAL STATUS 1/15/2021

Work in Progress

Alameda Addition / Renovation
Columbine HS Aux Gym, Exterior Entry
Conifer HS Aux Gym
Golden HS Artificial Turf & Track
Green Mountain HS Aux Gym
Jefferson Jr./Sr. HS Addition / Renovation
Kendrick Lakes ES Replacement
Bell MS Addition
Manning School Addition
Parmalee ES Addition / Renovation
Warren Tech South
Wayne Carle MS Addition
Lumberg ES Addition / Renovation
LED Replacement Phase I Districtwide
Security Cameras Districtwide

2018 CAPITAL IMPROVEMENT PROGRAM – FINANCIAL STATUS 1/15/2021

In Design

Evergreen HS Renovation

Evergreen MS Addition/Renovation

Marshdale ES Replacement

Pomona HS Addition/Renovation

Powderhorn Addition/Renovation

Prospect Valley ES Replacement

Ralston Valley HS Addition/Renovation

Standley Lake HS Addition/Renovation

21 Efficiency & Future Ready Projects

Playground Projects 10 Sites

HVAC Projects 6 Sites

Flooring Replacements 6 Sites

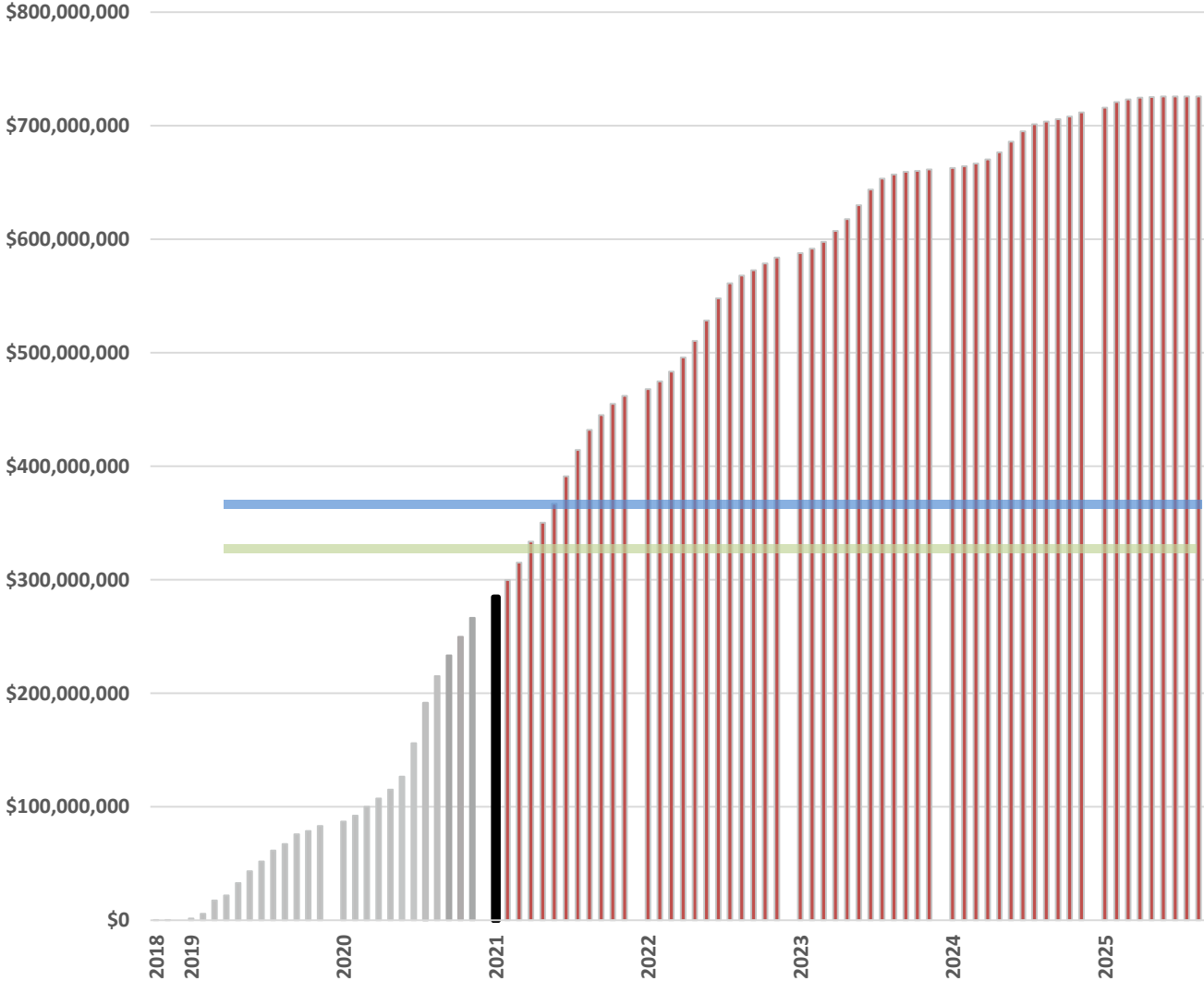
Artificial Turf & All-Weather Tracks 4 Sites

LED Replacements

Furniture, Fixtures & Equipment (FF&E) 14 Sites

2018 CAPITAL IMPROVEMENT PROGRAM – FINANCIAL STATUS 1/15/2021

Cash Flow





CAAC Design and Construction Update

2-18-2021



2021 Projects

New Buildings & Additions

Kendrick Lakes ES – Replacement Larson Incitti – GC Roche

Complete
Move-In
Spring Break



Conifer HS – Addition Cannon – CMGC FCI

Construction



Alameda HS – Addition WOLD – CMGC Phipps

Construction

<https://www.youtube.com/watch?v=AvFthS3aUpk&feature=youtu.be>



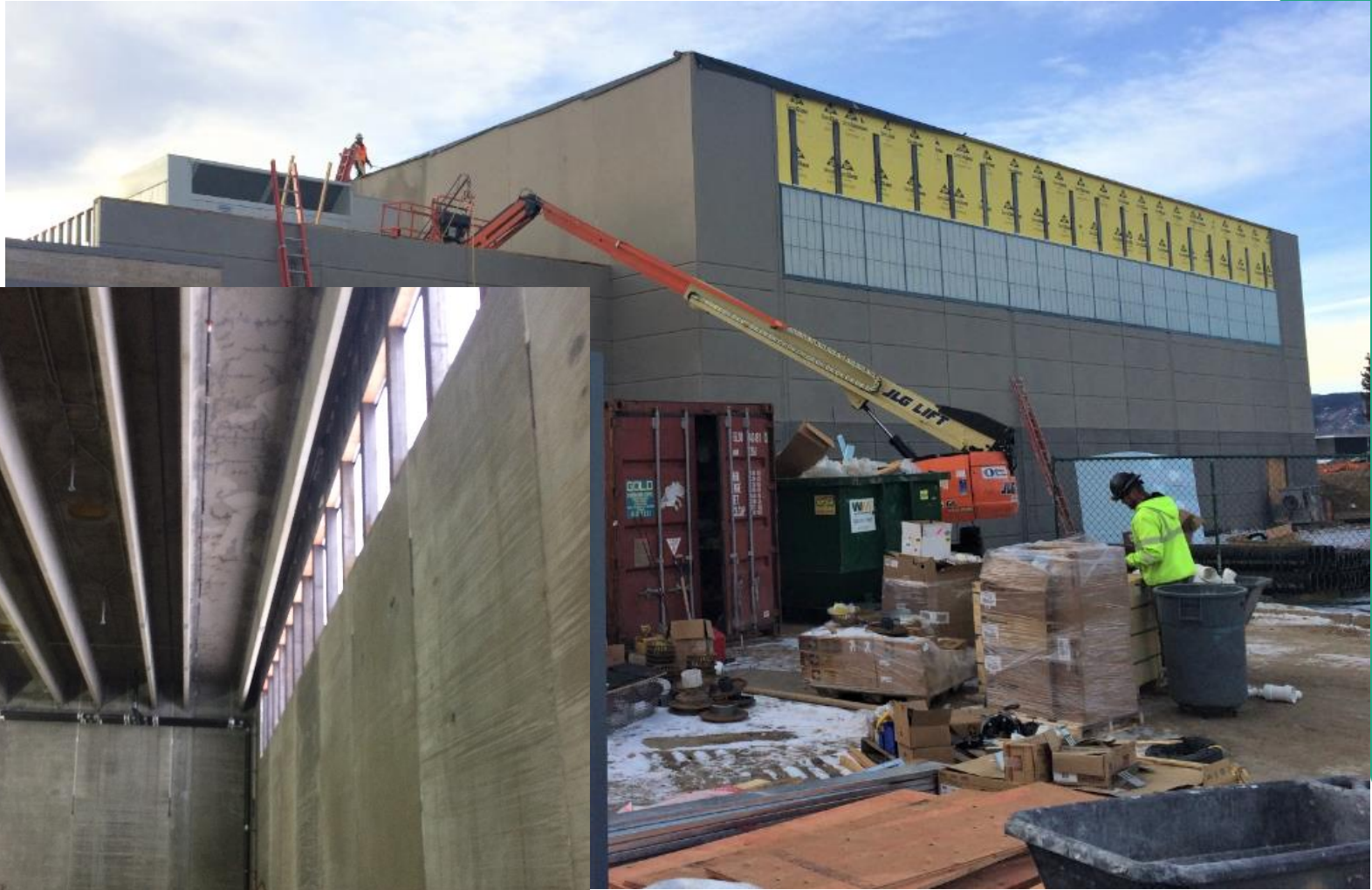
Green Mountain HS – Addition MOA – CMGC GE Johnson

Construction



Columbine HS – Addition EIDOS – CMGC Swinerton

Construction



Manning Opt – 1 Story – 7 Classroom Addition AMD – Fransen Pittman

Construction



CTE South – New Building HCM – JHL



Bell MS – 1 Story, 4 Classroom Addition Eidos – Golden Triangle

Construction



Jefferson HS – Aux Gym Addition MOA – Haselden

<https://youtu.be/ojfXYAXNsFI>

Construction



Wayne Carle – 2 Story – 8 Classroom Addition RB+B – Basset

Construction



Parmalee ES – 1 Story – 6 Classroom Addition + 2 Alts OZ – Saunders

Construction



Lumberg ES – 4 CR Addition MOA – CMGC Haselden

Construction



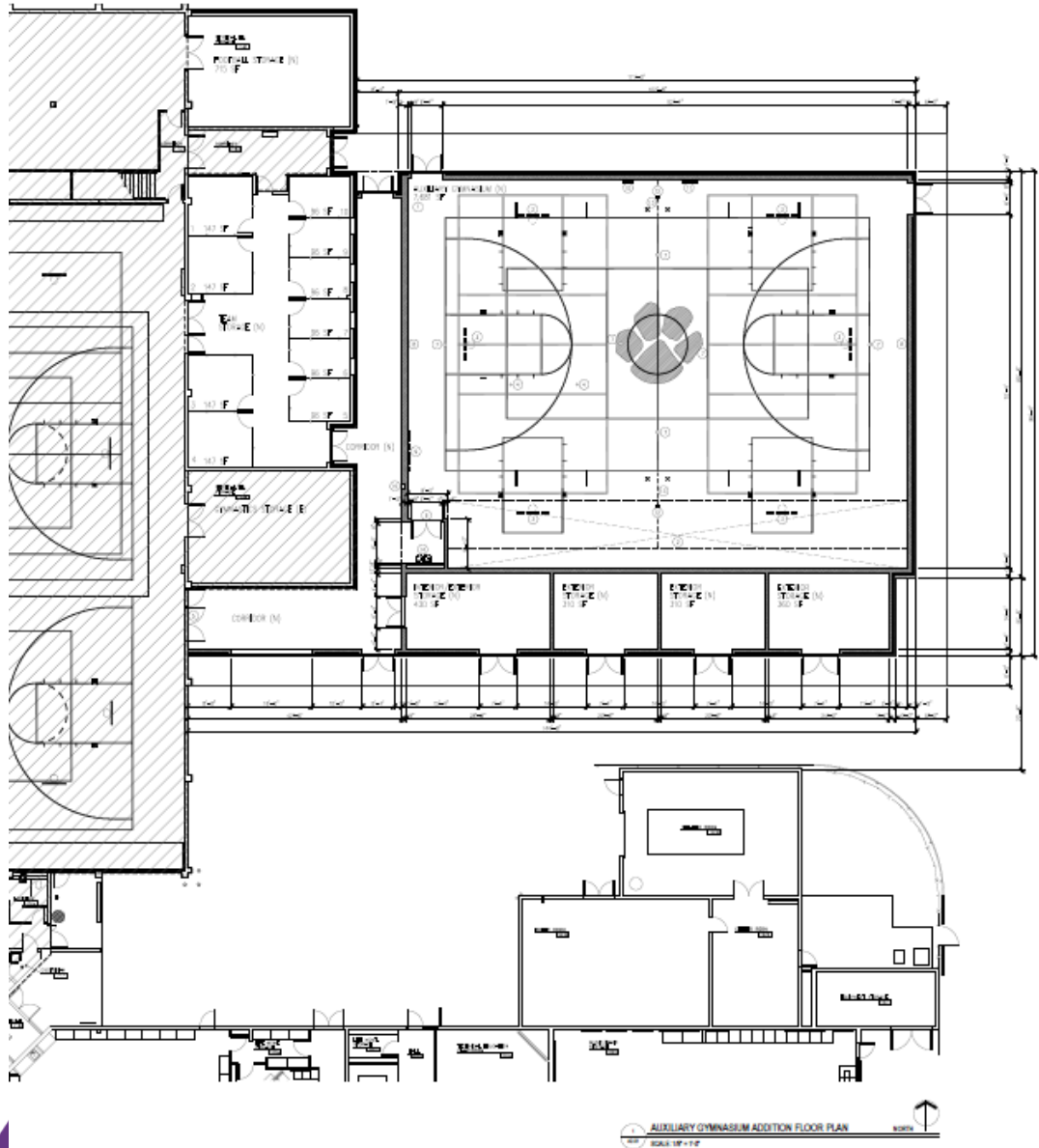
Foster ES – 1 Story – 7 Classroom Addition Larson Incitti – GE Johnson

Construction



Pomona HS – Aux Gym Addition Sybazz – CMGC Saunders

GMP 2/22



D'Evelyn – Addition & Efficiency Future Ready HCM - TBD

Bid 3/11



Marshdale ES - Replacement

Bid 3/16

HCM - TBD



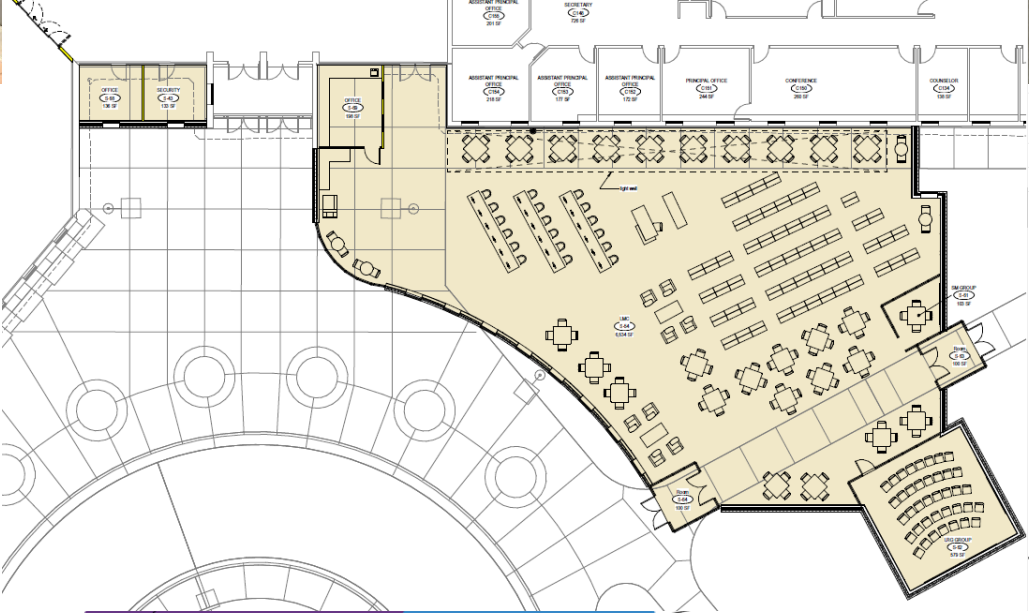
Standley Lake HS - Addition Cannon - TBD

Design
Development
Fall Bid



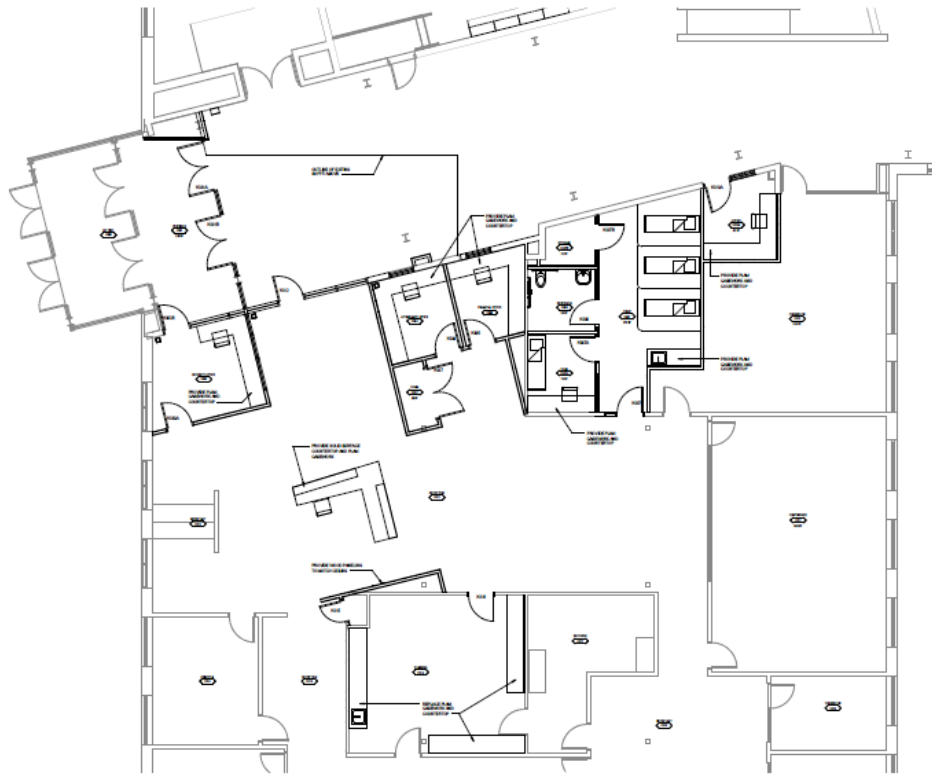
Ralston Valley HS Addition EUA - TBD

Schematic
Design
Fall Bid



Evergreen HS Efficiency Future Ready DLR - TBD

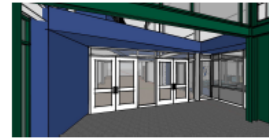
Design
Development
Fall Bid



ENLARGED VESTIBULE PLAN



IMAGES OF PROPOSED SECURITY VESTIBULE AND RECEPTION AREA



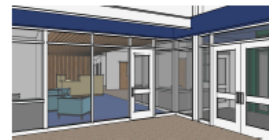
VIEW OF VESTIBULE/SECURITY CHECK IN



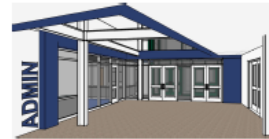
VIEW OF RECEPTION AREA



VIEW OF RECEPTION AREA



VIEW OF RECEPTION FROM CORRIDOR



VIEW OF VESTIBULE FROM CORRIDOR

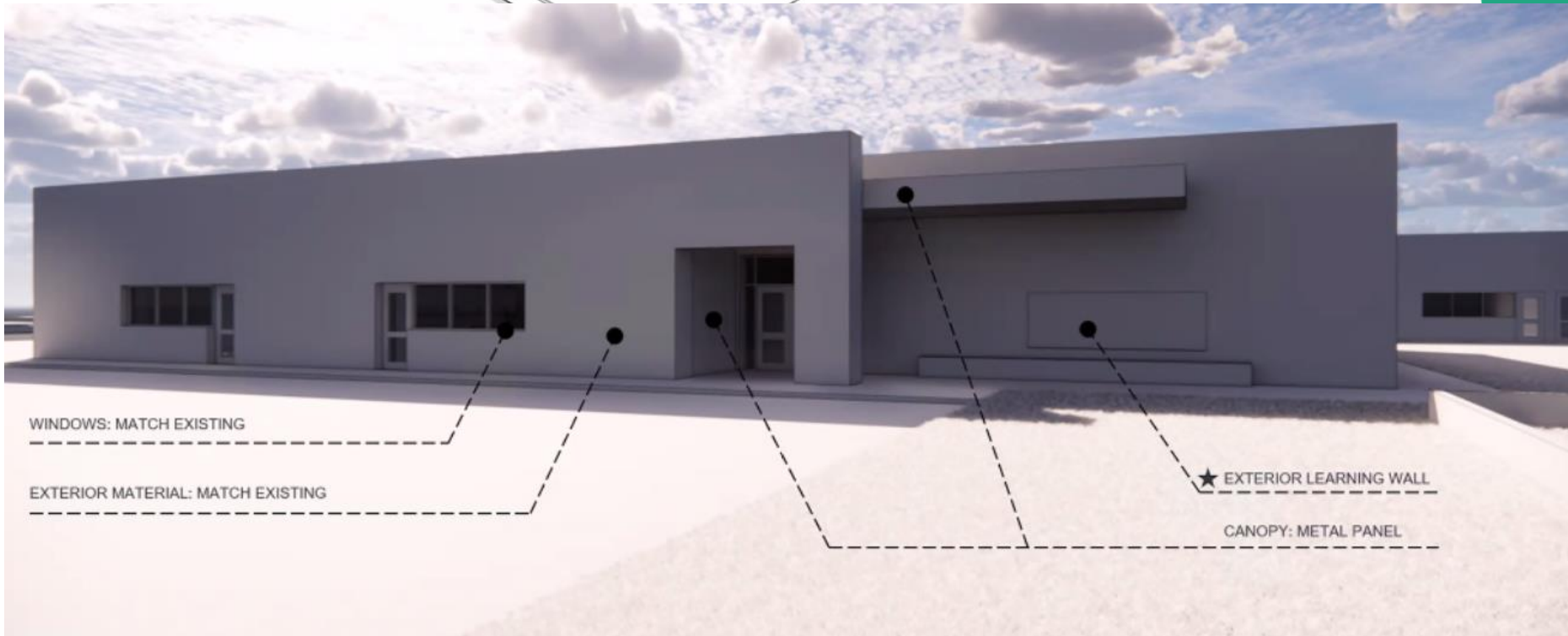
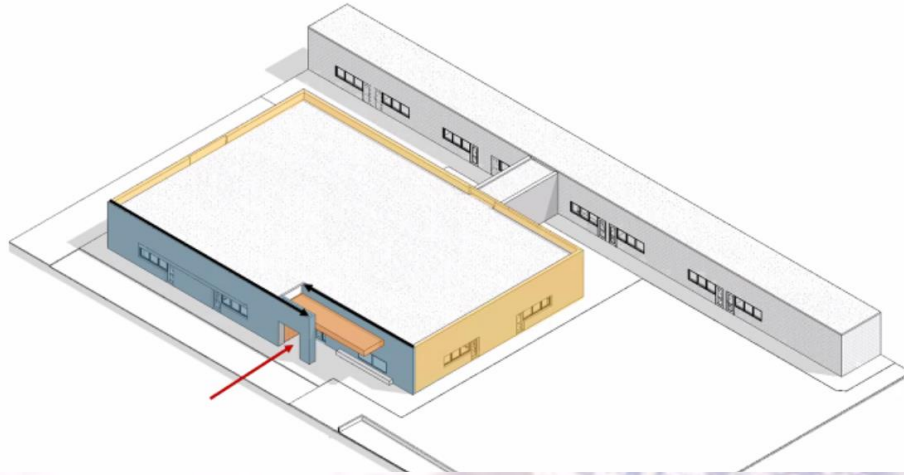
Prospect Valley ES - Replacement MOA - TBD

Design
Development
Fall Bid



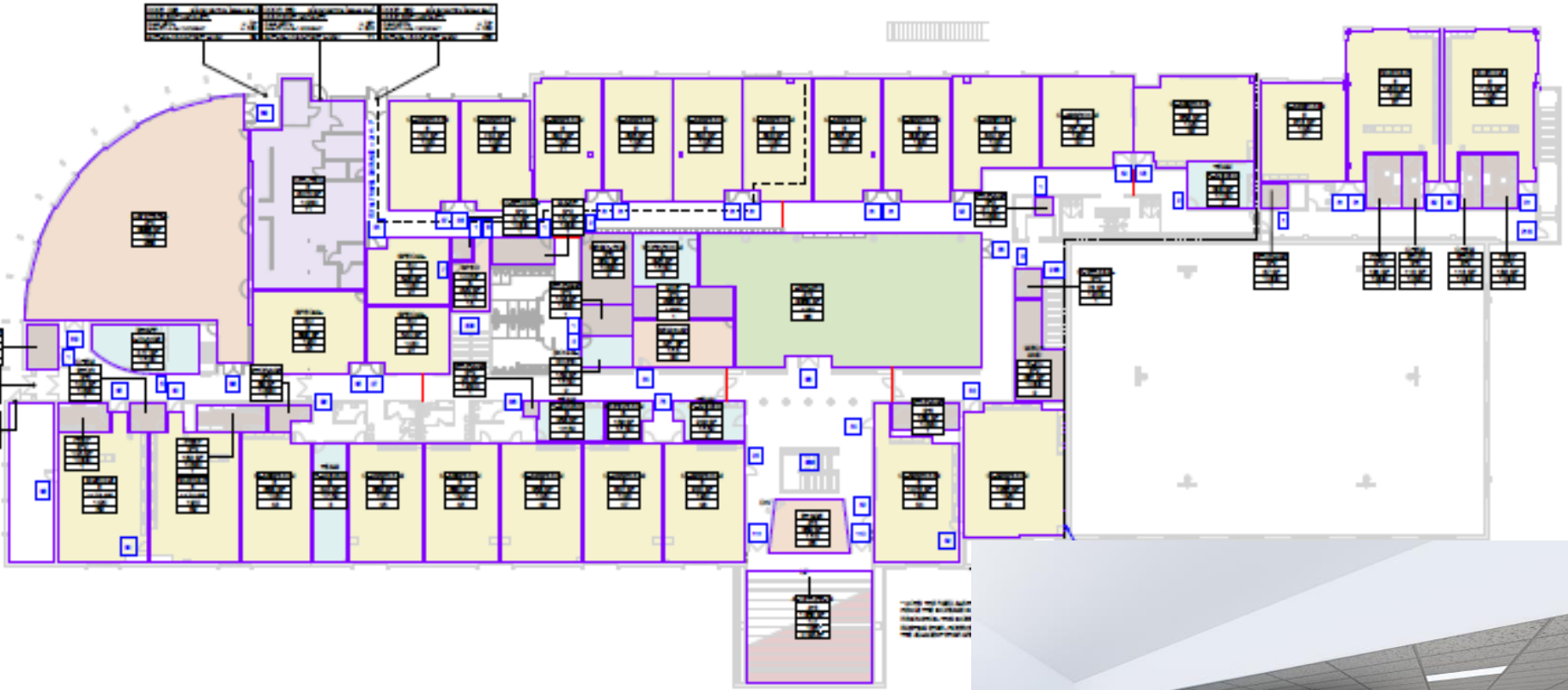
Powderhorn ES - Addition Hollis & Miller – TBD

Schematic
Design
Development
Fall Bid



Evergreen MS Efficiency & Future Ready AMD - TBD

Design
Development
Fall Bid



2021 24 Efficiency Future Ready & DW projects

DW Mechanical – 5 Schools
Elk Creek ES (RTU),
Edgewater ES (Boiler), Peck ES (Boiler)
Secrest ES (RTU's) , Thomson ES (RTU)

Columbine – US Engineering

DW Roofing – 3 Schools

D'Evelyn Opt - SR-DK – Arapahoe

Fitzmorris ES - SR-DK – Arapahoe

Lawrence ES - SR-DK – United Materials

Construction

DW Roofing – 3 Schools

Emory ES - WJE - Powers

Westgate ES – WJE - United Materials

Stevens ES - WJE - Douglass

Construction

Maple Grove ES
Efficiency Future Ready
RTA – Golden Triangle

Bid 2/16
\$578,440
Budget
\$598,512



Kyffin ES
Efficiency Future Ready
Eidos – GH Phipps

Bid 2/16
\$3,030,800
Budget
\$3,073,162



Fitzmorris ES
Efficiency Future Ready
Eidos – Roche Construction

Bid 2/16
\$777,700
Budget
\$838,594



Lawrence ES
Efficiency Future Ready
Eidos – Bryan Construction

Bid 2/16
\$1,612,277
Budget
\$1,955,370



Brady - Efficiency Future Ready

Alan Ford –Himmelman apparent low

Bid 2/17
\$1,410,117
Budget
\$1,282,000



Deane ES
Efficiency Future Ready
LOA - TBD

Bid 2/18



Lasley ES & Patterson ES Efficiency Future Ready

Bid 2/19

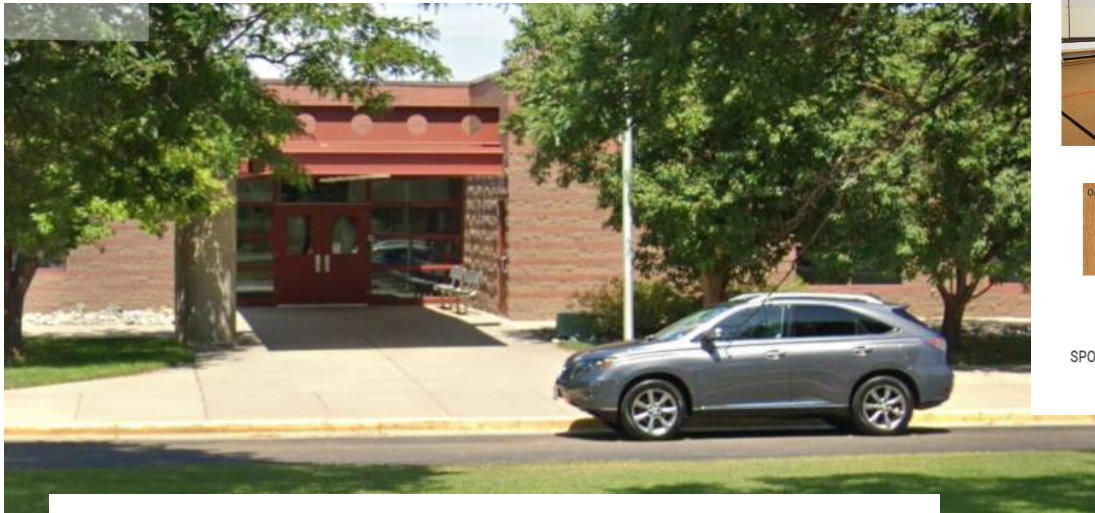
Treanor HL - TBD



Ryan ES & Sheridan Green ES Efficiency Future Ready

Bid 3/4

RB+B - TBD



ARCHITECTURAL NARRATIVE

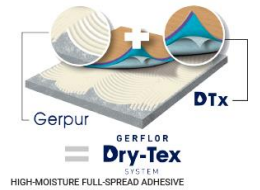
Replace Original Sports Court Flooring



SPORTS COURT FLOORING
GERFLOR - TARAFLEX SPORTS M PLUS



MAPLE DESIGN WITH MULTI-COLOR GAME LINES



HIGH-MOISTURE FULL-SPREAD ADHESIVE

SHERIDAN GREEN ELEMENTARY SCHOOL
Schematic Design Submittal

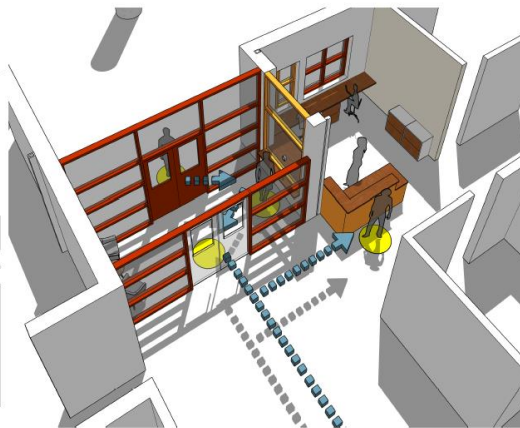
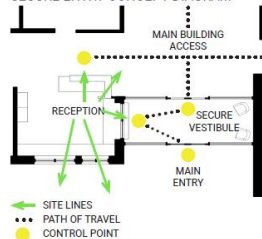
ARCHITECTURAL NARRATIVE

Secure Entry

Vestibule and Entry Changes

The existing hollow metal vestibules exterior and interior openings will remain in-place and only be modified to accept electronic strikes/access controls. The west wall of the vestibule will be opened to receive a new transaction window. The south exterior wall will be opened to receive a new exterior hollow metal window, allowing for enhanced visibility to any approaching visitors. The reception area will be re-configured to allow for three full workstations and better visibility to the main school corridor.

SECURE ENTRY CONCEPT DIAGRAM



PERSPECTIVE of SECURE ENTRY CONCEPT
Changes Highlighted in Orange



Dennison ES Efficiency Future Ready

Bid 3/4

Hollis & Miller- TBD



Everitt MS & Westridge ES Efficiency Future Ready

Bid 3/5

OZ - TBD



Kullerstrand ES, Miller Special School Efficiency Future Ready Larson Incitti – TBD

Bid 3/10



Allendale ES, Stott ES, Vanderhoof ES Efficiency Future Ready EUA – TBD

Bid 3/23



Carmody MS & Devinny ES
Efficiency Future Ready
DLH - TBD

Bid 3/23



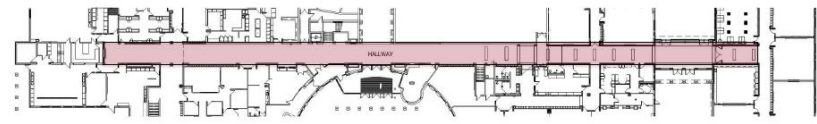
Chatfield HS, Dakota Ridge HS Efficiency Future Ready Cannon - TBD

Bid April

CANNONDESIGN



Dakota Ridge High School Hallway Carpet Replacement



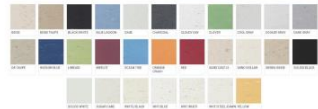
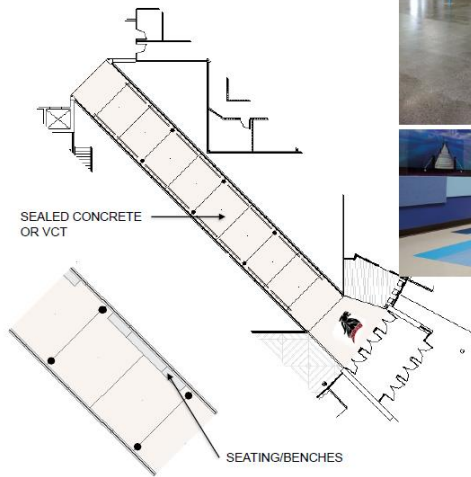
HALLWAY FLOOR FINISH REPLACEMENT



Chatfield High School Bridge



CANNONDESIGN



Security Glass Installation 12 - Schools

Creighton MS	Rose Stein
Red Rocks ES	Mandalay MS
Weber ES	Moore MS
Meiklejohn ES	Drake MS
Ken Caryl MS 95% Complete	Dutch .
Leawood ES Glass on order	Conifer HS



DW – Playgrounds –
Elk Creek ES, Normandy ES
Shaeffer ES

Bid April

Lime Green - TBD



DW – Playgrounds –
Warder ES, Secrest ES, Thomson ES,
Red Rocks ES, Stevens ES, Peck ES

Bid April

Design Concepts - TBD



DW Turf Fields – Alameda HS,
D'Evelyn HS (T&F), Jefferson HS (T&F) &
Wheat Ridge HS (track + drainage)
HCM - Saunders

GMP
\$10,808,555



AHS
\$2,369,333



D'Evelyn
\$2,562,097



Jefferson & Lumberg
\$3,140,543 & \$210,600



WRHS
\$2,525,981

DW LED 2021 – Ackerman – CMGC McKinstry

GMP March



1. **Columbine Hills ES**
2. **Edgewater ES**
3. **Elk Creek ES**
4. **Emory ES**
5. **Kyffin ES**
6. **Red Rocks ES**
7. **Shaffer ES**
8. **Stevens ES**
9. **Stony Creek ES**
10. **Thomson ES**
11. **Warder ES**
12. **West Jefferson ES**

Next Meeting 3/18/21